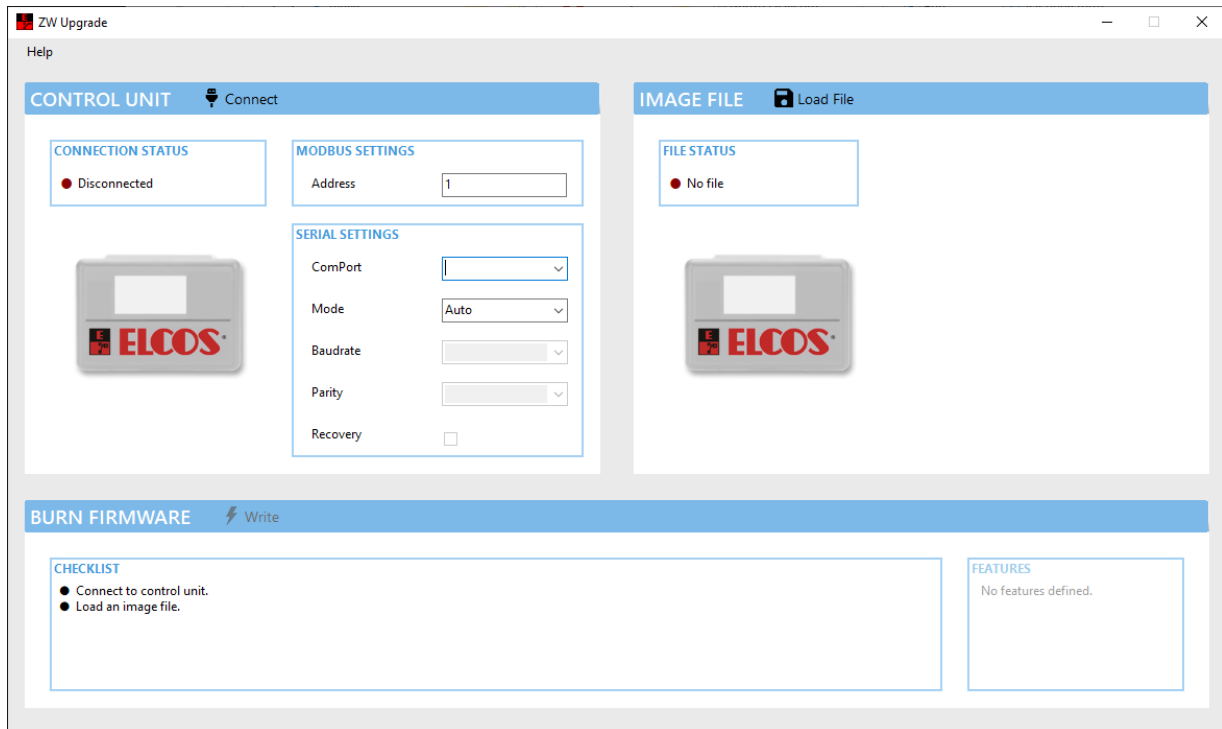


ZW-UPGRADE

User's manual



| Date | Revision | Description | Page |
|------------|----------|----------------|------|
| 21/12/2022 | 1.00 | First release. | |
| | | | |
| | | | |



CONTENTS

| | |
|--------------------------------------|---|
| CONTENTS..... | 2 |
| BRIEF DESCRIPTION..... | 2 |
| CABLE..... | 2 |
| CONNECTION, LOADING AND UPGRADE..... | 2 |
| CONTROL UNIT..... | 2 |
| IMAGE FILE..... | 3 |
| BURN FIRMWARE..... | 3 |
| UPGRADE..... | 3 |
| CONFIGURATION..... | 4 |
| INSTALLATION FOLDER..... | 4 |
| COMPATIBILITY..... | 4 |
| LICENSE..... | 4 |

BRIEF DESCRIPTION

ZW-Upgrade makes possible to upgrade firmware in ELCOS control units.

CABLE

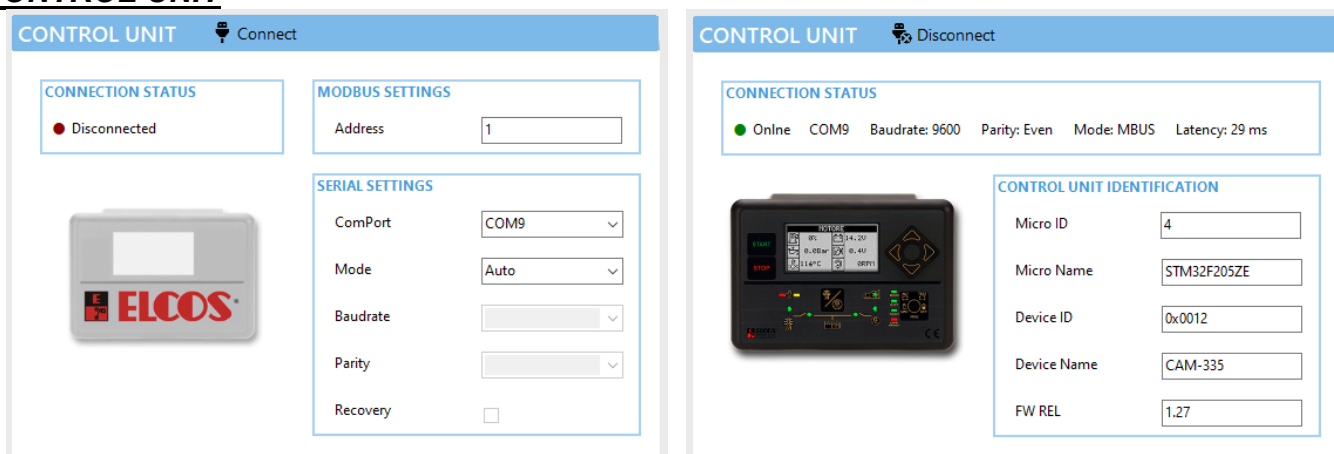
Connect at least power supply of the control unit.

Connect PC via serial connection: RS232, RS485, USB. Supported interfaces vary by model.

CONNECTION, LOADING AND UPGRADE

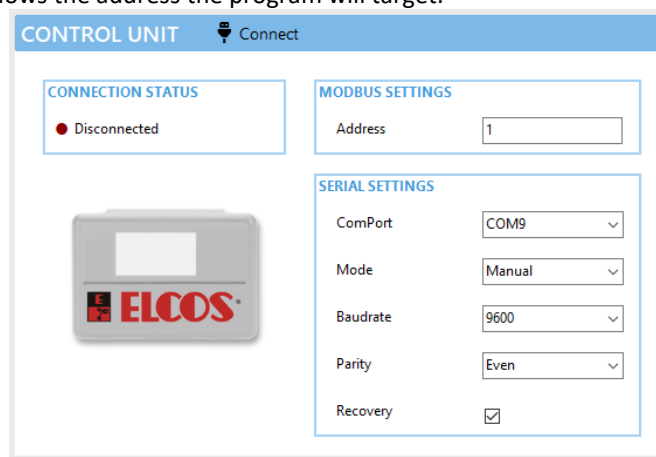
The first window displayed provides access to the program's essential function settings, which can be split into 3 different parts: CONTROL UNIT, IMAGE FILE and BURN FIRMWARE.

CONTROL UNIT



The CONTROL UNIT part include:

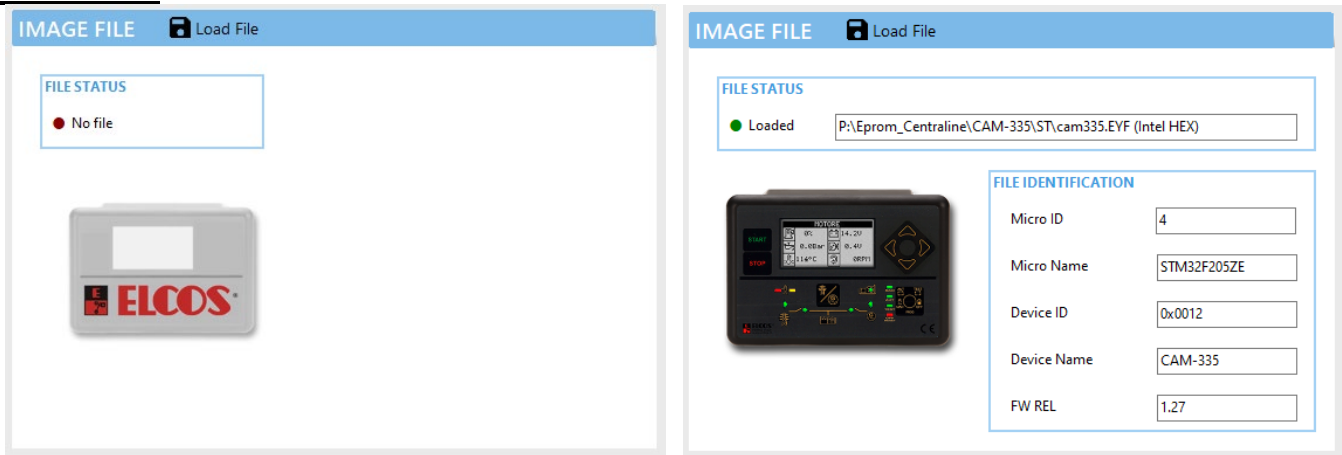
- Connect/Disconnect Button: if a control unit is connected and the parameters are set correctly this will start the connection of the control unit otherwise it will end the connection.
- CONNECTION STATUS: see if a control unit is disconnected or the parameters of the connection in use.
- MODBUS SETTINGS: it shows the address the program will target.



- SERIAL SETTINGS: it shows the address and the parameters that the program will use when you press "Connect".
 - ComPort: Serial interface connected to the device

- Mode: In Auto mode the program will try to fill automatically this information. In Manual you need to insert communication information.
- Baudrate: speed of device's communication port.
- Parity: setup of device's communication port.
- Recovery: In case a previous update was unsuccessful it is possible to flag "Recovery", this mode is available only in Manual and it will try to communicate with control unit in upgrade mode.
- CONTROL UNIT IDENTIFICATION: it shows picture and hardware/firmware information of a connected control unit.

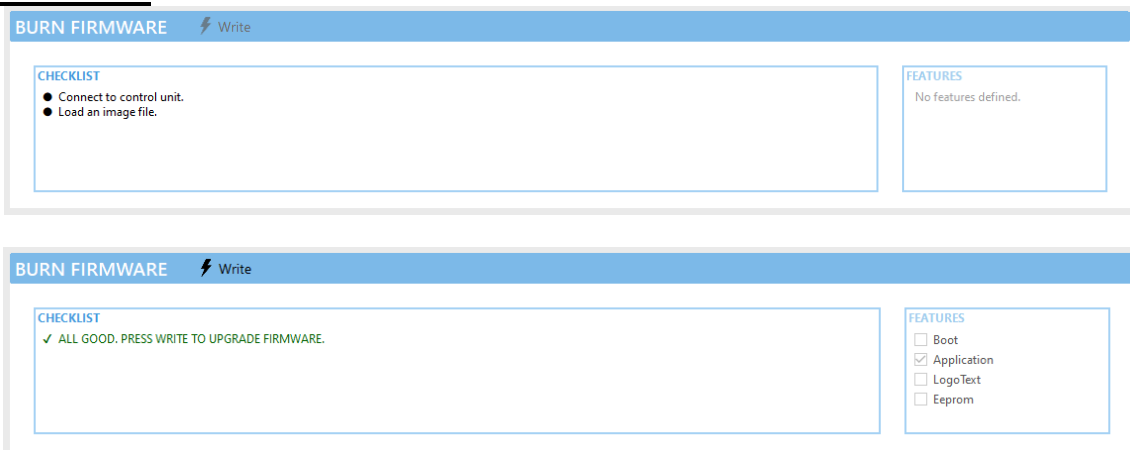
IMAGE FILE



The IMAGE FILE part include:

- Load File Button: if pressed asks where is possible to find the Firmware File to write inside the control unit.
- FILE STATUS: it shows if a firmware version is loaded.
- FILE IDENTIFICATION: it shows the details of a loaded firmware.

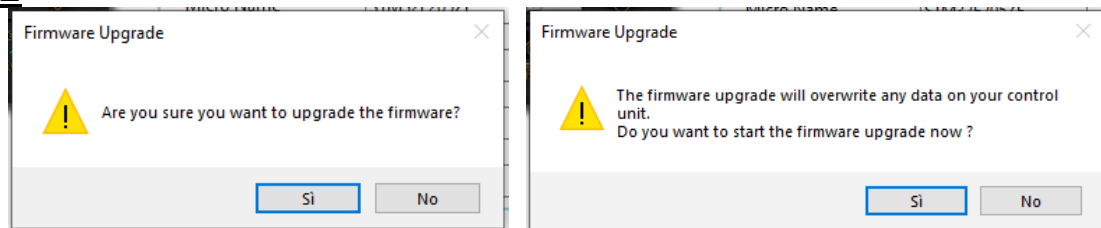
BURN FIRMWARE



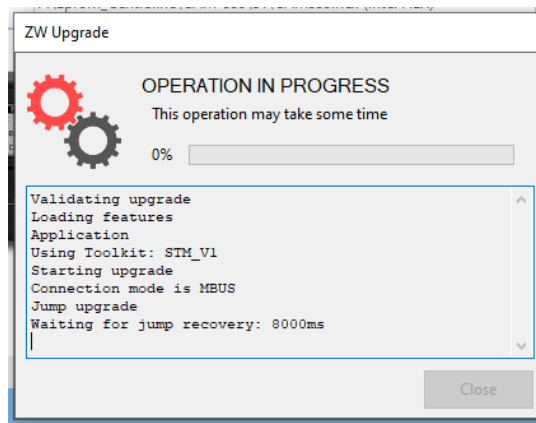
The BURN FIRMWARE part include:

- Write Button: this button can be pressed only if control unit is connected, firmware is loaded and matches same device.
- CHECKLIST: it suggests which steps you must take to update the firmware of a control unit and show you the status.

UPGRADE



After that you press the Write button the software will ask if you are sure to take the upgrade, if you say Yes this will take to the advancement bar.



When the window shows OPERATION IN PROGRESS, it is imperative to not disconnect or cut off the power supply to the control unit: there is a risk to permanently damaging control unit.

CONFIGURATION

ZW-Upgrade is distributed in User mode; not all the functions are available.

INSTALLATION FOLDER

The installation folder includes:

- DB folder: a collection of data about all the control units supported by this software. You can modify and/or integrate DB.
- application_log.txt: a log of all operations performed with the program.

COMPATIBILITY

ZW-SMART software is compatible with:

- Windows 7 and later versions.
- .NET Framework 4.8 and later versions.

LICENSE

The software is Freeware. Read and accept the user license before installing.

Software User License Agreement

Copyright (c) <2023> <ELCOS s.r.l.>

Permission is hereby granted, free of charge, to any person obtaining a copy of this software and associated documentation files (the "Software"), to deal in the Software without restriction, including without limitation the rights to use, copy, modify, merge, publish, distribute, sublicense, and/or sell copies of the Software, and to permit persons to whom the Software is furnished to do so, subject to the following conditions:

The above copyright notice and this permission notice shall be included in all copies or substantial portions of the Software.

THE SOFTWARE IS PROVIDED "AS IS", WITHOUT WARRANTY OF ANY KIND, EXPRESS OR IMPLIED, INCLUDING BUT NOT LIMITED TO THE WARRANTIES OF MERCHANTABILITY, FITNESS FOR A PARTICULAR PURPOSE AND NONINFRINGEMENT. IN NO EVENT SHALL THE AUTHORS OR COPYRIGHT HOLDERS BE LIABLE FOR ANY CLAIM, DAMAGES OR OTHER LIABILITY, WHETHER IN AN ACTION OF CONTRACT, TORT OR OTHERWISE, ARISING FROM, OUT OF OR IN CONNECTION WITH THE SOFTWARE OR THE USE OR OTHER DEALINGS IN THE SOFTWARE.

ELCOS s.r.l.

www.elcos.it

info@elcos.it