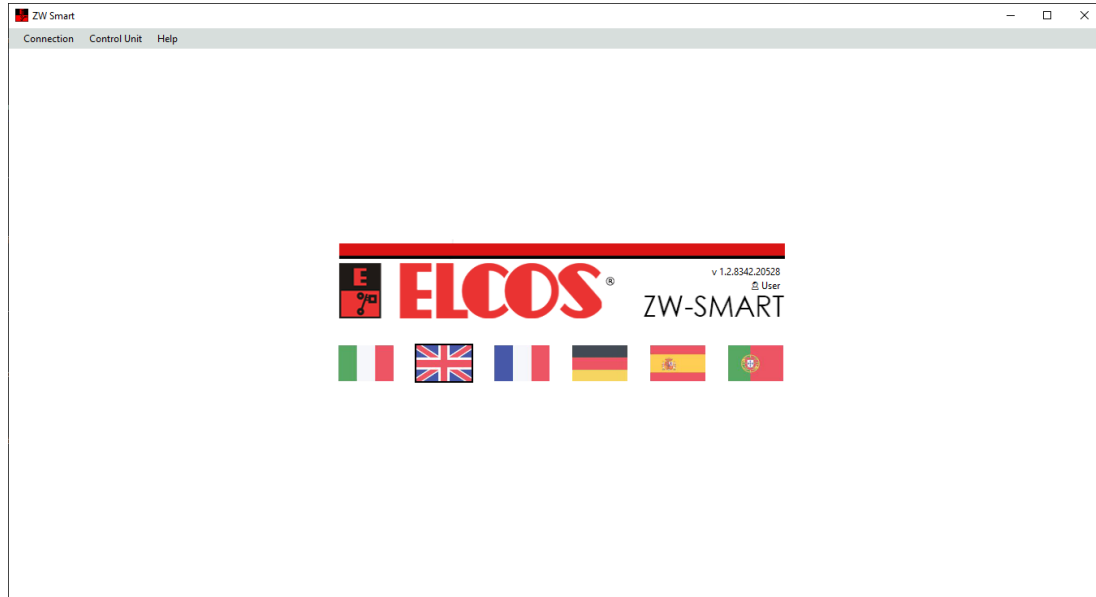


ZW-SMART

User's manual



Date	Revision	Description	Page
20/11/2018	1.00	First release	
08/06/2020	1.01	Flags	
21/11/2022	1.02	Main screen, plugins, history, compatibility	
17/10/2024	1.03	Additions for REMOTE CONNECTION paragraph and chapter: FIRMWARE UPDATES	3,4



CONTENTS

CONTENTS.....	2
BRIEF DESCRIPTION.....	2
CONNECTION.....	2
DIRECT CONNECTION.....	2
REMOTE CONNECTION.....	3
FIRMWARE UPDATES.....	4
PLUGIN.....	4
CONTROL UNIT PROGRAMMING MENU.....	5
PARAMETERS.....	5
TUNING.....	5
LOGO and TEXT.....	6
<i>LOGO/TEXT PERSONALIZATION PROCEDURE.....</i>	6
HISTORICAL.....	7
COMPATIBILITY.....	7
LICENSE.....	7

BRIEF DESCRIPTION

ZW-Smart makes it possible to program parameters in ELCOS control units that support it, offering the advantage of not having to vary the settings manually. In addition, in selected devices, it allows operations that are not possible via traditional programming, like changing the LOGO, text, etc.

This software is implemented by plugins (non-autonomous programs that interact with the main program to enhance the original functionality). Each plugin manages a type of control unit (and firmware, if necessary).

The software can be downloaded from the website www.elcos.it.

CONNECTION

DIRECT CONNECTION

The first window displayed provides access to the program's essential functioning settings.

The settings include:

- Preferred language: click on the corresponding flag to select.
- Connection: control unit connection parameters.

It can be either a serial connection (RS232, RS485, USB) or an ETHERNET connection: in this case, use the ZE-100 converter and set the IP address previously programmed in the dedicated interface software (MGate Manager).

After setting the type of connection, click on the CONNECT button.

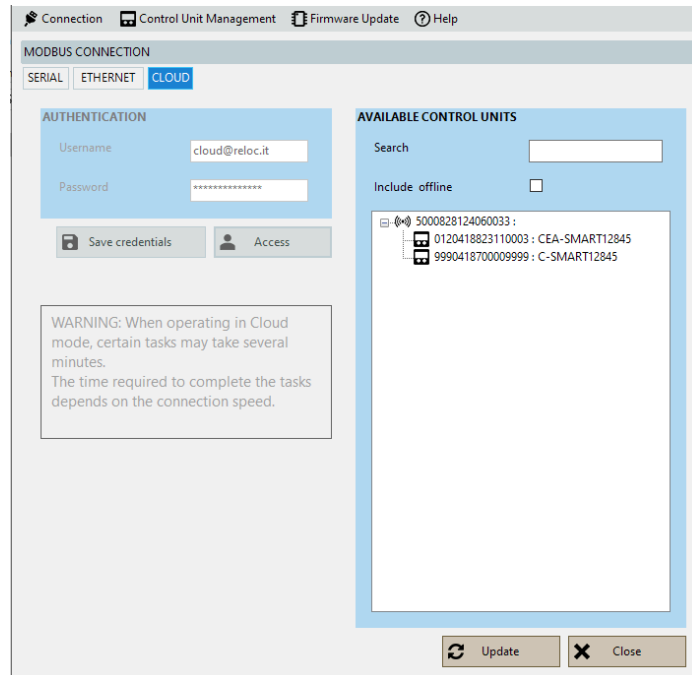
The screenshot shows the 'Zw Smart' application window with a menu bar containing 'Connection', 'Control Unit', and 'Help'. The main area is divided into two sections: 'MODBUS CONNECTION' and 'SERIAL'. In the 'MODBUS CONNECTION' section, the 'Address' field contains the value '1' and the 'Interface' dropdown menu is set to 'SERIAL'. In the 'SERIAL' section, the 'ComPort' dropdown is set to 'COM9', the 'Mode' dropdown is set to 'Auto', and the 'Baudrate' dropdown is set to '9600'. At the bottom of the window, there is a 'Connect' button with a plug icon.

As soon as the communication is made, a window will display indicating the type of control unit and its ID information.

The screenshot shows the 'UNIT ONLINE' window. It displays several fields with their corresponding values: 'Model' is 'CAM-335', 'Code' is '27', 'Pid' is '5', 'Fw Rel.' is '1.27', and 'Latency (ms)' is '6'. At the bottom of the window, there are two buttons: 'Start plugin' with a checkmark icon and 'Disconnect' with an 'X' icon.

REMOTE CONNECTION

By using the ZW-SMART software, you can connect remotely to the control units connected to a GTW-4.0 device.
Select the CLOUD connection and enter your log-in credentials:

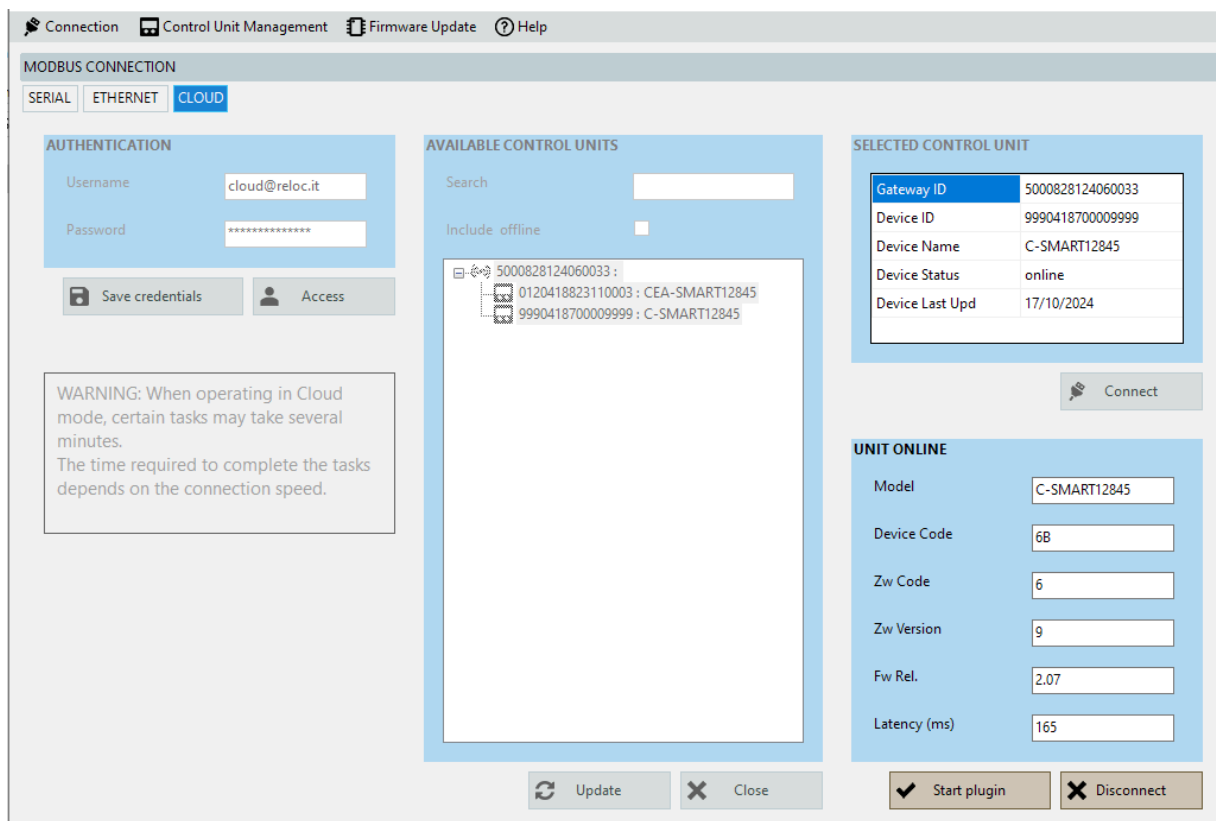


It then displays all the GTW-4.0 (ONLINE and OFFLINE) available and the connected ELCOS control units.

The software provides various access levels; each with different available functions. All the possible operations by locally connecting an Elcos device (USB or other interface) are also possible remotely; it might take longer depending on the type of connection.

In particular, you can:

1. Set the operating parameters (all devices, all types of users)
2. Make adjustments (all devices, only "Manufacturer" users)
3. Update the FW (certain devices, only "Manufacturer" users)



FIRMWARE UPDATES

After you have established a local or remote connection with the control unit, you will be able to update the firmware.

Remote updates are not available for any models that do not support this function. In this case, you can update the firmware - via USB or serial port - by using the ZW-UPGRADE software.

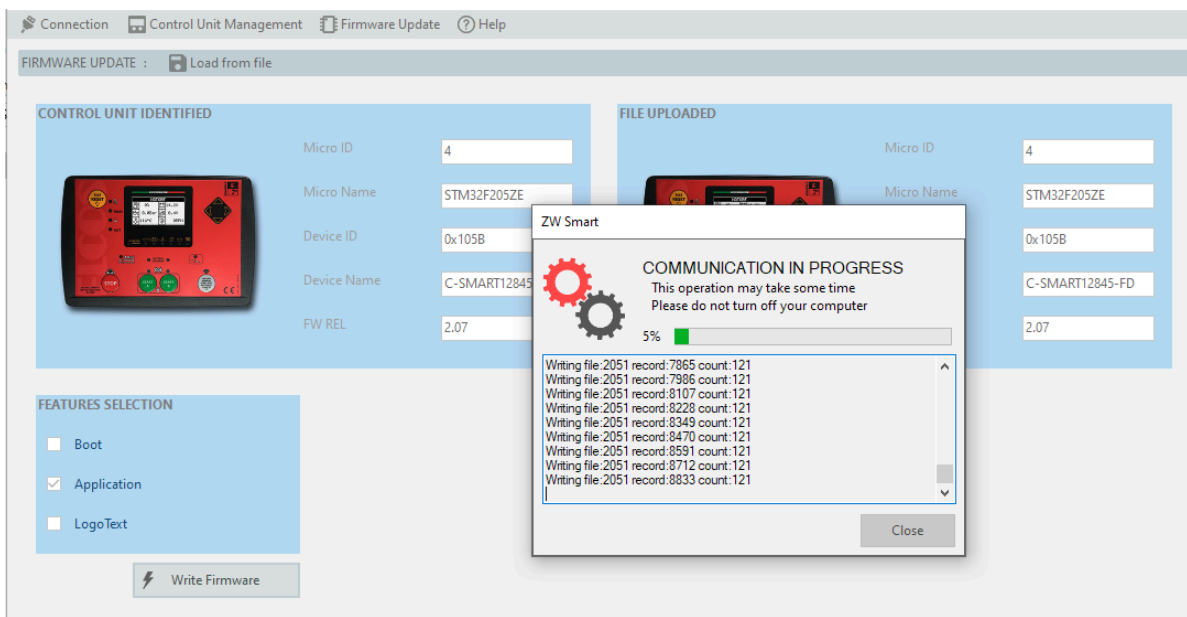
You need to contact Elcos to get a firmware release.

- Under the “Firmware Update” section, press “Load from File” and select a binary file (like .EYF) compatible with the control unit model.
- Tick the features to be updated:
 - Boot (only “Manufacturer” users)
 - Application (all users)
 - Logo Text (only “Manufacturer” users)
- Press “Write Firmware” to start the update.

The operation will be instant if carried out locally via USB or serial port, but it will take longer (several minutes) if carried out remotely (Cloud connection).

A “progress bar” will indicate how far the procedure is coming along.

Restart the control unit when the update is complete.

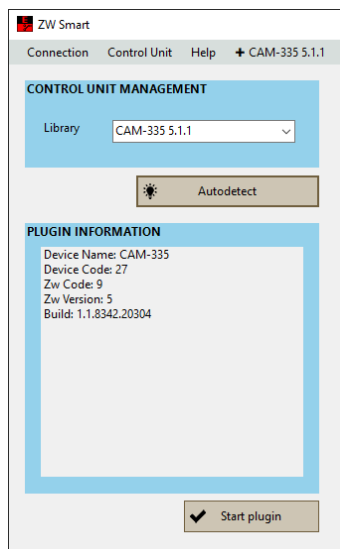


PLUGIN

Each control unit uses its own dedicated plugin.

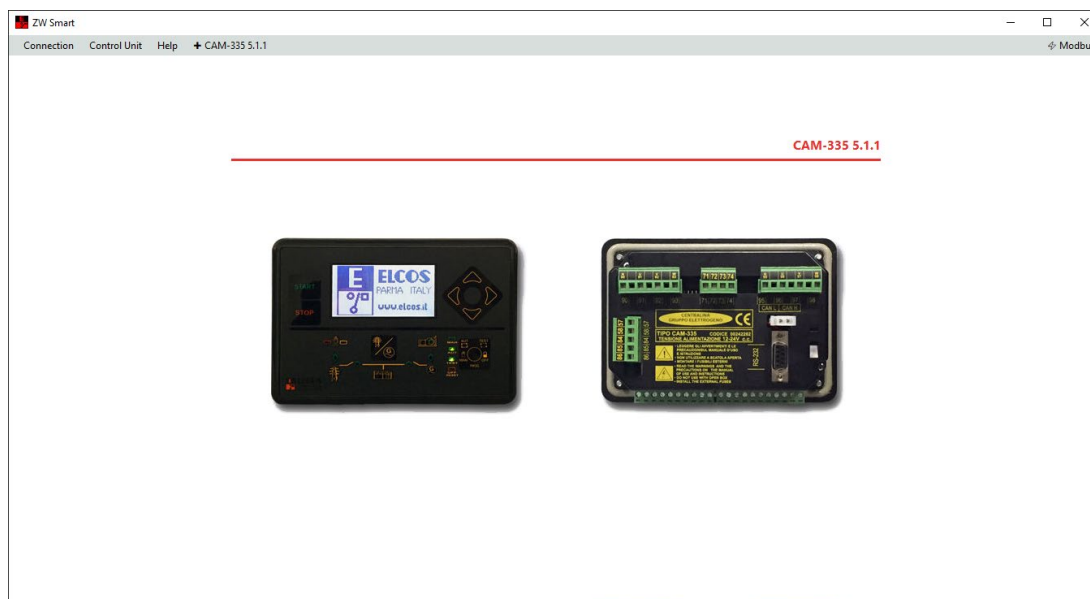
Click on the “control unit” window and then on “manage unit”.

From the “library” folder, select the specific plugin for the control unit or click on auto-detect if it is already connected.



After connecting the control unit and selecting and opening the plugin, a screen with the image of the control unit will appear on the display.

To access to the PROGRAMMING MENU, select the key “+” then the model of the control unit and its release, found in the program’s main toolbar; in the case below “+ CAM-335 f1.14 p1”.



CONTROL UNIT PROGRAMMING MENU

This menu contains the functions for quick control unit programming. To help improve understanding, it was subdivided into four main Submenus and many secondary ones; the main Submenus are:

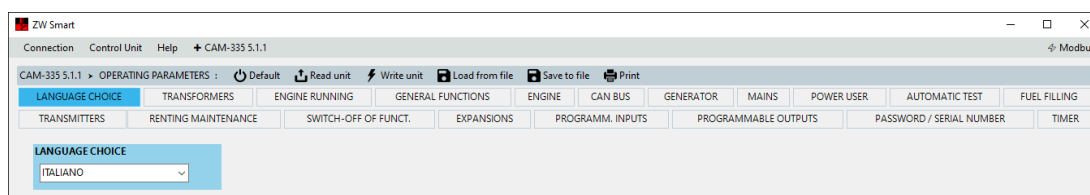
- Parameters: control unit programming (times, thresholds, switch-offs, switch-ons, etc.).
- Tuning: resets, display contrast adjustment and date/time settings.
- Logo and text: personalize logo and messages displayed on the control unit.
- Close the plugin: back to the initial menu for connection type selection.

The menus and programming folders available to each control unit vary from model to model and might not support programming accessible to other models.

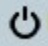





PARAMETERS

The window contains all the programming, stored in folders. Each folder represents a programming section of the control unit. To go from one folder to the next, simply click on the folder tab.

All the possible programming options are displayed for each parameter.



The following buttons are available on the toolbar:

-  Used to display the default settings.
-  Used to acquire the programming of the connected control unit.
-  Used to transfer the programming to the connected control unit.
-  “Load from file”: used to load the previously saved settings.
-  “Save to file”: lets you save the settings displayed.
-  Lets you print a complete list of the displayed programming.

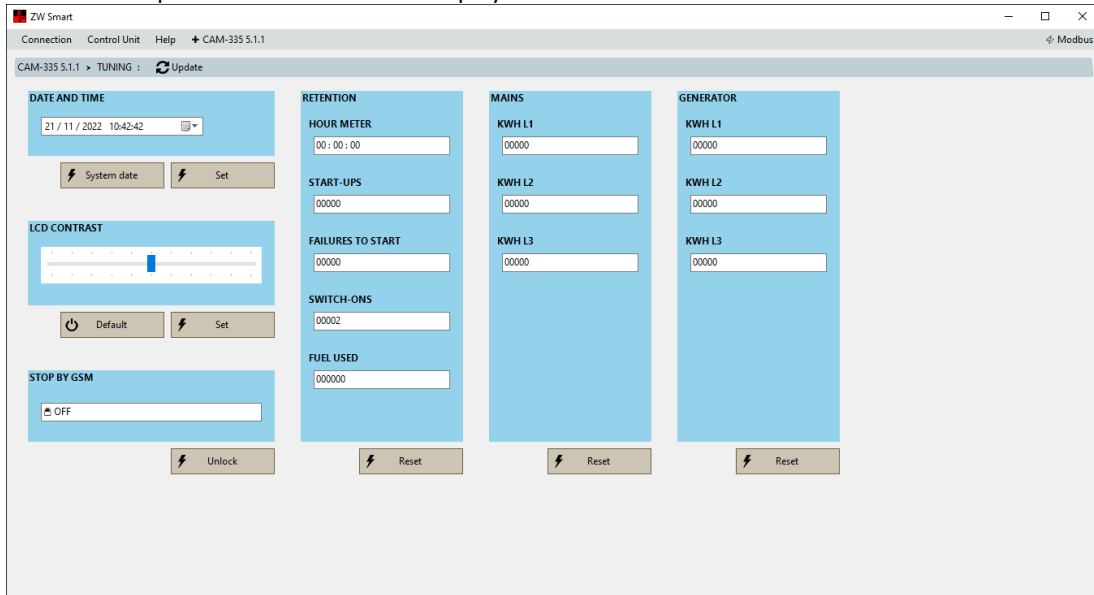
TUNING

The window contains useful and immediate tools, such as display contrast adjustment and usage stats display, such as the control unit’s time counter, startups, and other.

In addition, the software lets you manually program the date and time or import them directly from the connected PC.

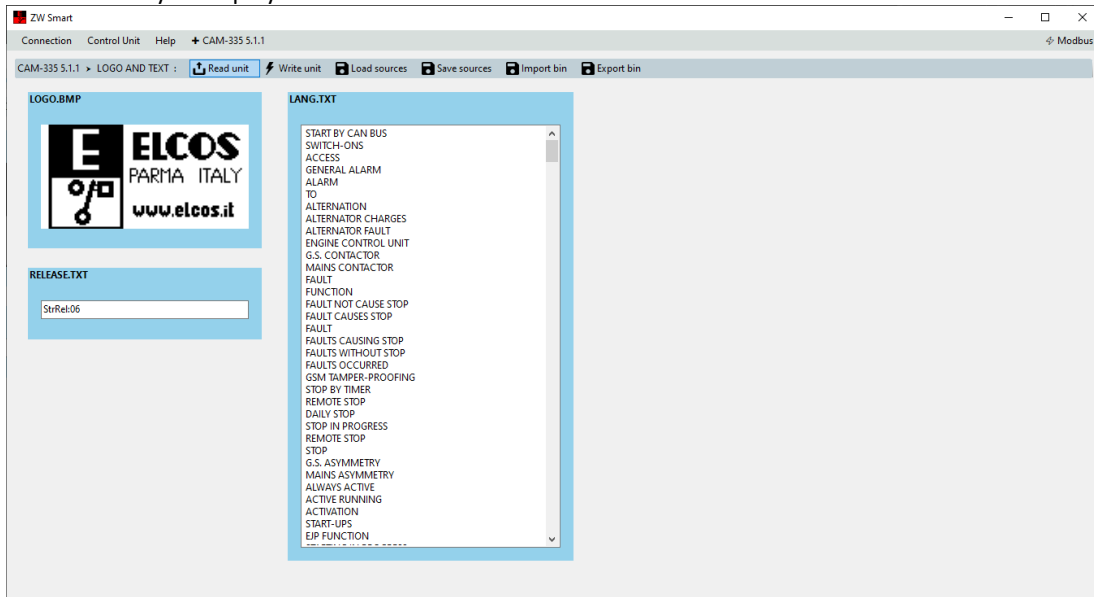


In this window the “Update” button is used to display the control unit's current values.



LOGO and TEXT

The software lets you personalize the logo graphically and program all the text messages you want, if supported by the control unit's hardware. It also lets you display the release.



The following buttons are available on the toolbar:



Used to acquire the logo and text found in the connected control unit.



Lets you transfer the displayed logo and text to the control unit.



“Load source files”: used to display the saved logo and text messages on the display.



“Save source files”: necessary to save the settings displayed:

- logo.bmp
- release.txt
- text.txt



“Import bin”: used to display the saved logo and text in binary form.



“Export bin”: used to save logo and text in binary form.

LOGO/TEXT PERSONALIZATION PROCEDURE

A drawing program not included with the software is required to modify the logo.

1. Read the control unit's settings.
2. Save in source code form.



3. Modify the .bmp and/or .txt file as desired (do not modify the release file).
4. Load the modified files.
5. Write in the control unit.

IMPORTANT: We recommend you save the default settings before making any changes whatsoever.

HISTORICAL

Chronological list of events recorded by the control unit.

COMPATIBILITY

ZW-SMART software is compatible with:

- Windows 7 and later versions.
- .NET Framework 4.8 and later versions.

LICENSE

The software is Freeware. Read and accept the user license before installing.

Software User License Agreement

Copyright (c) <2018> <ELCOS s.r.l.>

Permission is hereby granted, free of charge, to any person obtaining a copy of this software and associated documentation files (the "Software"), to deal in the Software without restriction, including without limitation the rights to use, copy, modify, merge, publish, distribute, sublicense, and/or sell copies of the Software, and to permit persons to whom the Software is furnished to do so, subject to the following conditions:

The above copyright notice and this permission notice shall be included in all copies or substantial portions of the Software.

THE SOFTWARE IS PROVIDED "AS IS", WITHOUT WARRANTY OF ANY KIND, EXPRESS OR IMPLIED, INCLUDING BUT NOT LIMITED TO THE WARRANTIES OF MERCHANTABILITY, FITNESS FOR A PARTICULAR PURPOSE AND NONINFRINGEMENT. IN NO EVENT SHALL THE AUTHORS OR COPYRIGHT HOLDERS BE LIABLE FOR ANY CLAIM, DAMAGES OR OTHER LIABILITY, WHETHER IN AN ACTION OF CONTRACT, TORT OR OTHERWISE, ARISING FROM, OUT OF OR IN CONNECTION WITH THE SOFTWARE OR THE USE OR OTHER DEALINGS IN THE SOFTWARE.

ELCOS s.r.l.

www.elcos.it

info@elcos.it